

2019-627B

Batch ID: V-15919-B2

Test ID: 3438657.0015

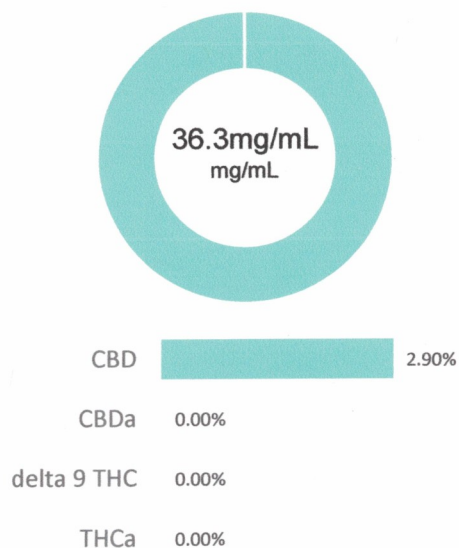
Reported: 11-Jun-2019

Method: TM14

Type: Solution

Test: Potency

## CANNABINOID PROFILE



Compound	LOQ (mg/mL)	Result (mg/mL)	Result (mg/g)
Delta 9-Tetrahydrocannabinolic acid (THCA-A)	2.36	0.00	0.0
Delta 9-Tetrahydrocannabinol (Delta 9THC)	1.18	0.00	0.0
Cannabidiolic acid (CBDA)	2.53	0.00	0.0
Cannabidiol (CBD)	1.41	36.30	29.0
Delta 8-Tetrahydrocannabinol (Delta 8THC)	1.29	0.00	0.0
Cannabinolic Acid (CBNA)	3.23	0.00	0.0
Cannabinol (CBN)	1.43	0.00	0.0
Cannabigerolic acid (CBGA)	2.06	0.00	0.0
Cannabigerol (CBG)	1.16	0.00	0.0
Tetrahydrocannabivarinic Acid (THCVA)	2.02	0.00	0.0
Tetrahydrocannabivarin (THCV)	1.05	0.00	0.0
Cannabidivarinic Acid (CBDVA)	2.35	0.00	0.0
Cannabidivarin (CBDV)	1.29	0.00	0.0
Cannabichromenic Acid (CBCA)	1.77	0.00	0.0
Cannabichromene (CBC)	2.13	0.00	0.0
<b>Total Cannabinoids</b>		<b>36.30</b>	<b>29.02</b>
<b>Total Potential THC**</b>		<b>0.00</b>	<b>0.00</b>
<b>Total Potential CBD**</b>		<b>36.30</b>	<b>29.02</b>

### NOTES:

Density = 1.25g/mL

N/A

% = % (w/w) = Percent (Weight of Analyte / Weight of Product)

\* Total Cannabinoids result reflects the absolute sum of all cannabinoids detected.

\*\* Total Potential THC/CBD is calculated using the following formulas to take into account the loss of a carboxyl group during decarboxylation step.

Total THC = THC + (THCa \* (0.877)) and Total CBD = CBD + (CBDa \* (0.877))

## FINAL APPROVAL



 Alex Smith  
11-Jun-2019  
7:59 AM

PREPARED BY / DATE




 Greg Zimpfer  
11-Jun-2019  
9:27 AM

APPROVED BY / DATE

Testing results are based solely upon the sample submitted to Botanacor Laboratories, LLC, in the condition it was received. Botanacor Laboratories, LLC warrants that all analytical work is conducted professionally in accordance with all applicable standard laboratory practices using validated methods. Data was generated using an unbroken chain of comparison to NIST traceable Reference Standards and Certified Reference Materials. This report may not be reproduced, except in full, without the written approval of Botanacor Laboratories, LLC. ISO/IEC 17025:2005 Accredited A2LA Certificate Number 4329.02



Certificate #4329.02

 <b>HAMMER ENTERPRISES</b> <small>INTEGRATED SOLUTIONS</small>	<b>Product Specification Sheet:</b> <b>Vapes</b>	<b>Document #:</b> <b>PSS-V-TF-VGP</b> <b>Version: 1.2</b>
<b>30616 Bryant Drive</b> <b>Evergreen, CO 80439</b>	<b>Product Code:</b> <b>V-1000-TF-VGP-CY-30ml</b>	<b>Issue Date:</b> <b>04/19/2019</b>
<b>Completed By:</b> <b>S. Balboa</b>	<b>Briana Drayton, Compliance &amp; Safety Officer</b> <b>BDrayton@HammerEnterprisesIS.com</b>	<b>Supersedes:</b> <b>07/24/2018</b>

#### SECTION 1: PRODUCT DETAILS

PRODUCT NAME	Hemp-derived Cannabidiol (CBD) Vape E-Liquid – Vegetable Glycerin Base
COMMON NAME	Hemp CBD Vape
PRODUCT DESCRIPTION	Cannabidiol (CBD) Tincture in Vegetable Glycerin
PLANT PART	Aerial parts of industrial hemp plant
INTENDED USE	For vaping purposes

EXTRACTION SOLVENT(S)	X	CO <sub>2</sub>	X	Ethanol	X	Hexane
-----------------------	---	-----------------	---	---------	---	--------

COUNTRY OF ORIGIN	USA		
MANUFACTURE DATE	06/08/2019	LOT #	V-15919-B2
BEST BY DATE	06/08/2020	CBD POTENCY	1,000 mg per 30 mL

#### SECTION 2: INGREDIENTS LIST AND DIRECTIONS FOR USE

INGREDIENTS LIST	SUGGESTED USE
Ingredients: Vegetable Glycerin, Cherry Flavor ( <i>Sunflower Seed Oil, Natural Flavors</i> ), Polysorbate 80, Hemp Cannabidiol (CBD) Isolate. <b><i>Manufactured in a facility that handles soy, salmon, anchovy, and walnuts.</i></b> <b><i>The FDA has not evaluated this product for safety or efficacy. This product is not intended to diagnose, treat, cure or prevent any disease.</i></b>	Fill Vape E-liquid in your favorite vaporizer, atomizer, or electronic cigarette.

#### SECTION 3: FORMULA COMPOSITION

ACTIVE INGREDIENTS	LOT NUMBER
Hemp Cannabidiol (CBD) Isolate	ISO-14219-B2
MEDIUM BASE	LOT NUMBER
Vegetable Glycerin	3371557425
Polysorbate 80	8829
FLAVORINGS	LOT NUMBER
Cherry	171013002

#### SECTION 4: PHYSICAL AND CHEMICAL PROPERTIES

PHYSICAL STATE	Liquid	COLOR	Viscous, white to slight pink homogenous oil	ODOR	Hemp, Cherry
----------------	--------	-------	--	------	--------------

#### SECTION 5: RESIDUAL SOLVENT ANALYSIS FOR HEMP CBD OIL AND/OR CBD ISOLATE

Hexane	< 60 ppm	Ethanol	< 100 ppm
--------	----------	---------	-----------

#### SECTION 6: STORAGE AND HANDLING

STORAGE AND HANDLING	Store in original container in a cool, dark place. Keep out of direct light and humidity.
----------------------	---

This document is provided for documentation purposes only. The information contained herein is believed to be accurate and represents the best information currently available to Hammer Enterprises Integrated Solutions, LLC. However, Hammer Enterprises Integrated Solutions, LLC makes no warranty, expressed or implied, regarding such information, and assumes no liability resulting from its use. Users should make their own investigations to determine the information suitability for their particular purposes. If there are any questions concerning the information contained in this sheet or its applicability to a particular use, the user is instructed to contact Hammer Enterprises Integrated Solutions, LLC. Hammer Enterprises Integrated Solutions, LLC assumes no responsibility for injury from the use of the product described in this sheet in a way different from that provided in the label directions.