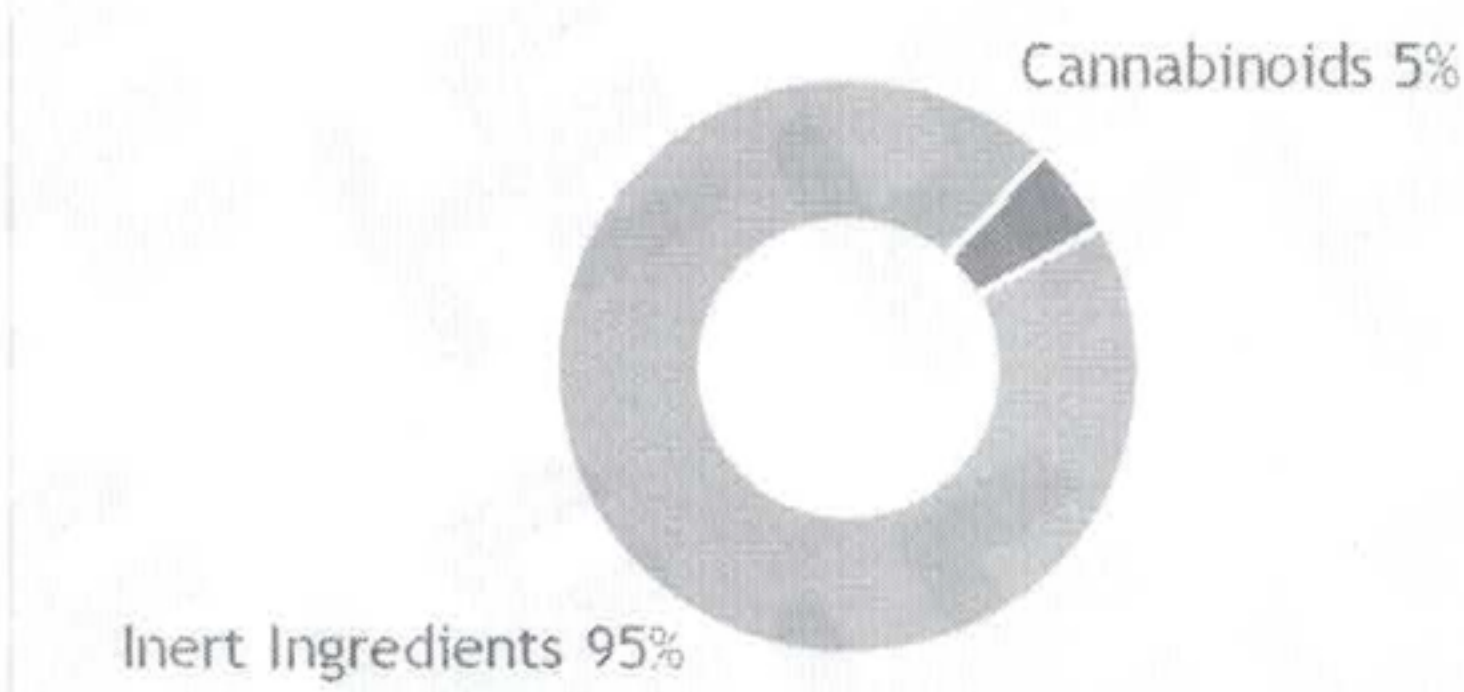


# Sacred Leaf

Cannabinoid Potency - Expected CBD: 50.00 mg/mL ± 10%

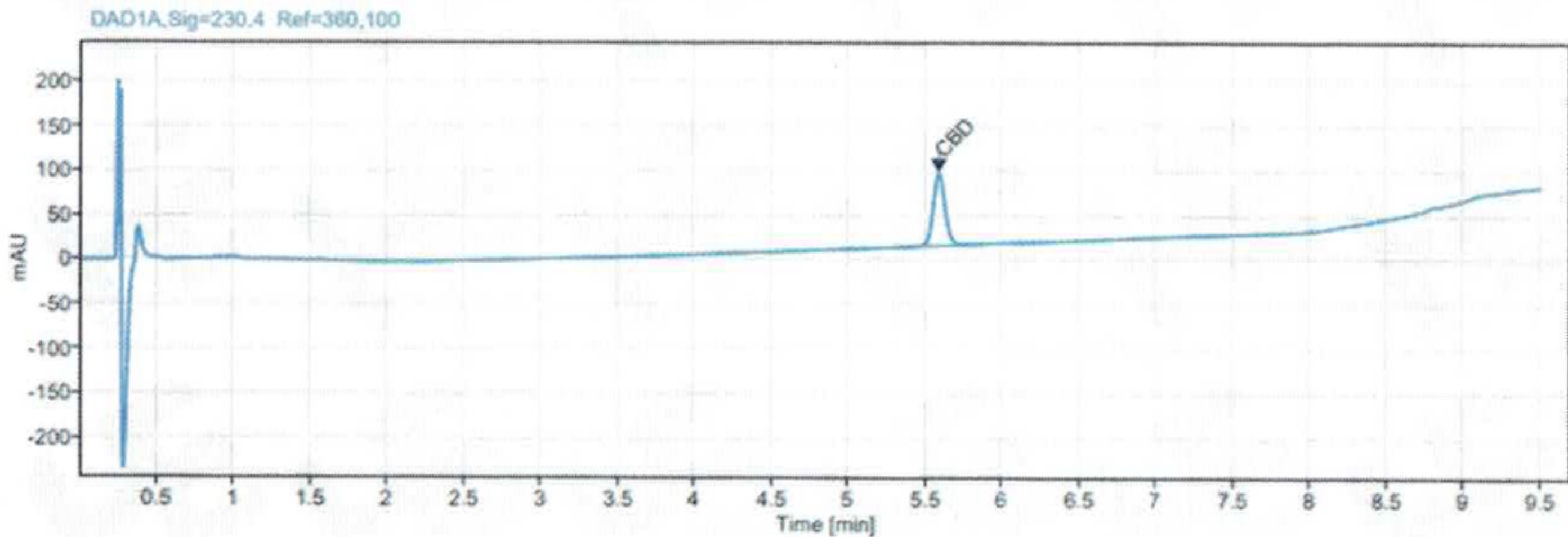
% Total Cannabinoids



\*Total d9-THC and CBD are calculated taking into account the loss of a carboxyl group during decarboxylation.  
The formulas are as follows : d9-THC = d9THC + (THCa \*(0.877))      CBD = CBD + (CBDa \*(0.877))  
\*\*Any compounds with results listed as "ND" were not detected during analysis.  
\*\*\*LOQ is the limit of quantitation for any given analyte.

	mg/mL	%	LOQ (mg/mL)
Total CBD:	51.09 mg/mL	5.1 %	0.05 mg/mL
CBD:	51.09 mg/mL	5.11 %	0.05 mg/mL
CBDa:	ND	ND	0.05 mg/mL
d9-THC:	ND	ND	0.05 mg/mL
CBC:	ND	ND	0.05 mg/mL
CBG:	ND	ND	0.05 mg/mL
CBGa:	ND	ND	0.05 mg/mL
CBN:	ND	ND	0.05 mg/mL
CBDV:	ND	ND	0.05 mg/mL
d8-THC:	ND	ND	0.05 mg/mL
THCa:	ND	ND	0.05 mg/mL
Density: 1.250 (kg/m³)		Specific Gravity: 1.254	

Chromatogram



SECTION 1: PRODUCT DETAILS

PRODUCT NAME	Hemp-derived Cannabidiol (CBD) E-Liquid – Vegetable Glycerin Base, Broad Spectrum		
PRODUCT DESCRIPTION	CBD E-Liquid in Vegetable Glycerin, Broad-Spectrum		
INTENDED USE	Fill Vape E-liquid in your favorite vaporizer, atomizer, or electronic cigarette. Not intended for oral consumption.		
COUNTRY OF ORIGIN	USA	LOT #	V-01221-B3
MANUFACTURE DATE	Jan 12, 2021	CBD POTENCY	51.09 mg/mL
BEST BY DATE	Jan 11, 2022	NET WEIGHT	1 fl. oz (30mL)

SECTION 2: INGREDIENT INFORMATION

INGREDIENTS LIST
Ingredients: Vegetable Glycerin, Organic Orange Flavoring (organic sunflower seed oil, natural flavors), Polysorbate 80, Organic Broad-Spectrum Hemp Cannabidiol (CBD) Distillate.
<b>Precautionary Allergen Statement:</b> <i>Manufactured in a facility that handles almonds, anchovy, coconut, salmon, soy, and walnut</i>
<i>The FDA has not evaluated this product for safety or efficacy. This product is not intended for oral use. This product is not intended to diagnose, treat, cure or prevent any disease.</i>

SECTION 3: STORAGE AND HANDLING

STORAGE AND HANDLING	Store in original container in a cool, dark place. Keep out of direct light and humidity.
----------------------	-------------------------------------------------------------------------------------------