

Sacred Leaf

Product Description: Hemp CBD Tincture 500mg/30mL OHSO, OCO2, NAT

Invoice Number: 2021-385A

Lot Number: T-18021-B2

Manufacture Date: Jun 29, 2021

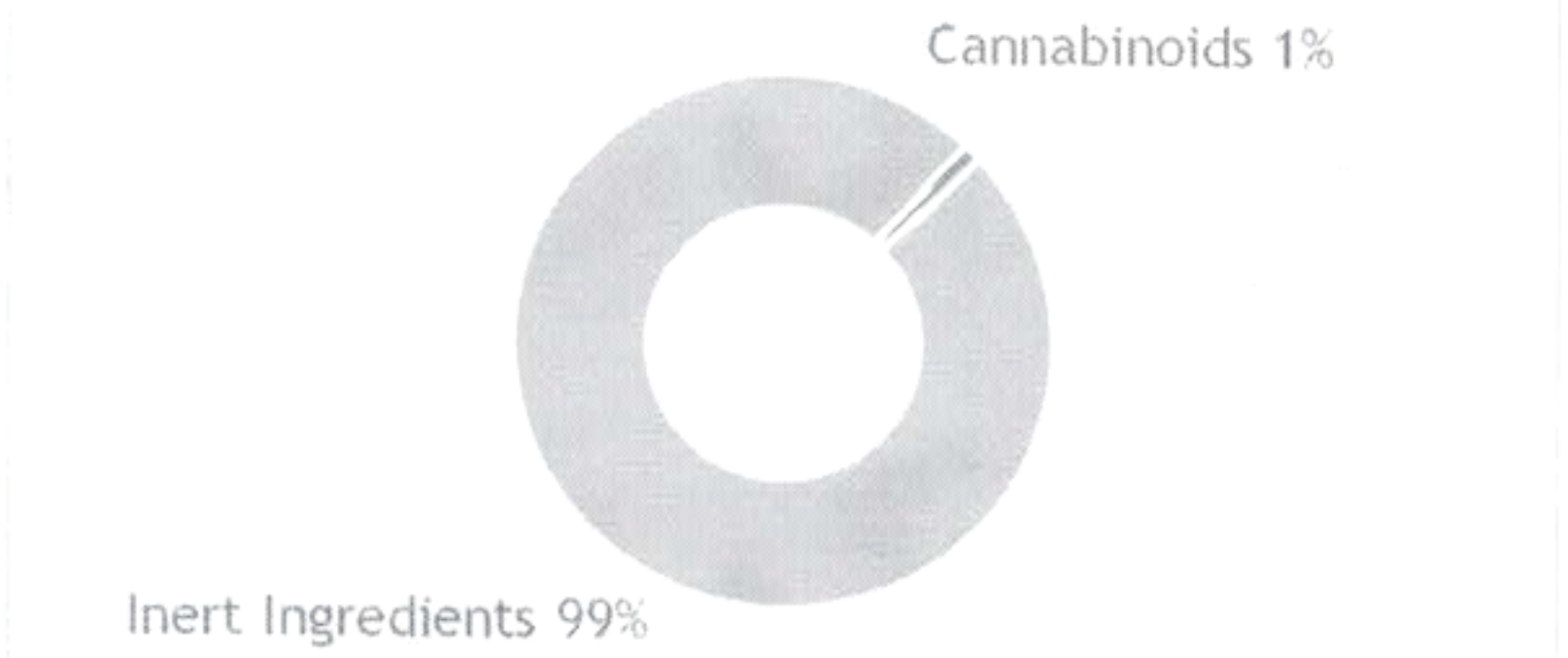
Product Code: T-500-OCO2-OHSO-NAT-30

Date of Analysis: Jun 30, 2021

Best By Date: Jun 29, 2022

Cannabinoid Potency - Expected CBD: 16.67 mg/mL ± 10%

% Total Cannabinoids



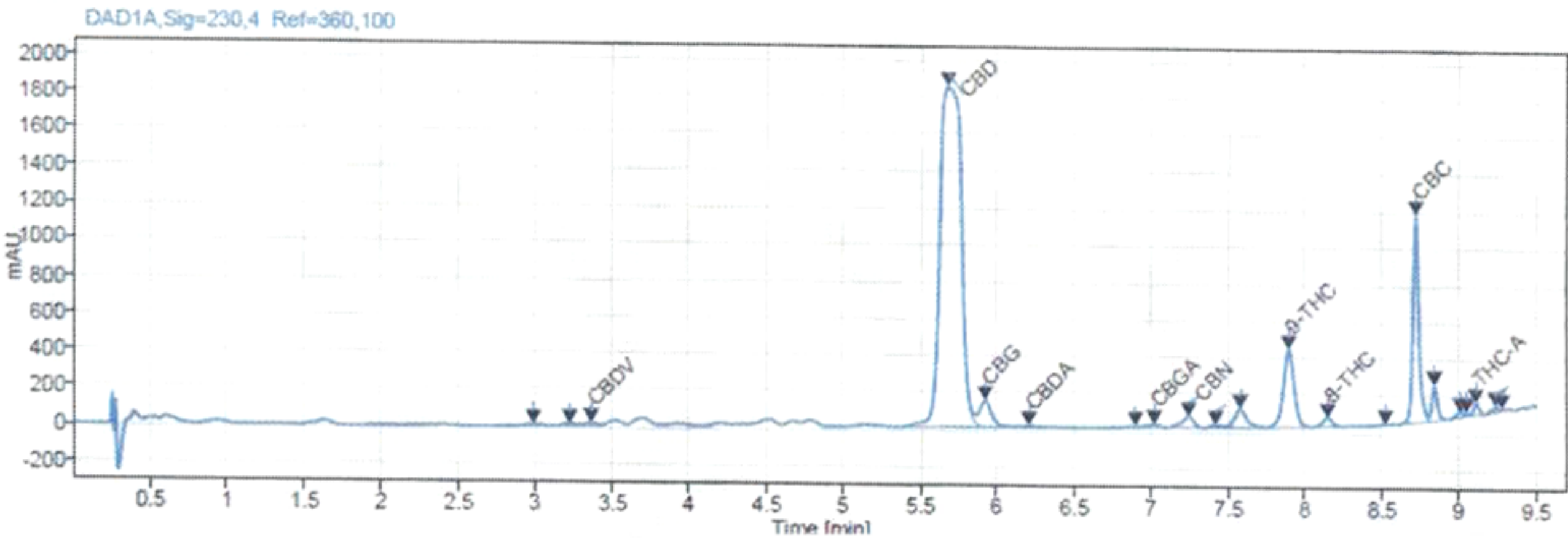
*Total d9-THC and CBD are calculated taking into account the loss of a carboxyl group during decarboxylation.
The formulas are as follows : d9-THC = d9THC + (THCa *(0.877)) CBD = CBD + (CBDa *(0.877))
**Any compounds with results listed as "<LOD" were below the Limit of Detection and were not detected.
***LOQ is the limit of quantitation for any given analyte.

	mg/mL	%	LOQ (mg/mL)
Total CBD:	17.09 mg/mL	1.17 %	0.05 mg/mL
CBD:	17.09 mg/mL	1.71 %	0.05 mg/mL
CBDa:	<LOD	<LOD	0.05 mg/mL
d9-THC:	0.00 mg/mL	0.00 %	0.05 mg/mL
CBC:	2.10 mg/mL	0.21 %	0.05 mg/mL
CBG:	0.31 mg/mL	0.03 %	0.05 mg/mL
CBGa:	<LOQ	<LOQ	0.05 mg/mL
CBN:	0.05 mg/mL	0.01 %	0.05 mg/mL
CBDV:	<LOQ	<LOQ	0.05 mg/mL
d8-THC:	0.09 mg/mL	0.01 %	0.05 mg/mL
THCa:	<LOQ	<LOQ	0.05 mg/mL

Density: 0.925 (kg/m³)

Specific Gravity: 0.928

Chromatogram



SECTION 1: PRODUCT DETAILS

PRODUCT NAME	Hemp-derived Cannabidiol (CBD) Tincture – Hemp Seed Oil Base, Full-Spectrum		
PRODUCT DESCRIPTION	CBD Tincture in Hemp Seed Oil, Full-Spectrum		
INTENDED USE	For oral consumption.		
COUNTRY OF ORIGIN	USA	LOT #	T-18021-B2
MANUFACTURE DATE	Jun 29, 2021	CBD POTENCY	17.09 mg/mL
BEST BY DATE	Jun 29, 2022	NET WEIGHT	1 fl. oz (30 mL) per bottle

SECTION 2: INGREDIENT AND NUTRITION INFORMATION

INGREDIENTS LIST	NUTRITION FACTS PANEL																				
<p>Ingredients: Organic Hemp Seed Oil, Organic Hemp Cannabidiol (CBD) Oil. <i>(Contains <0.3% THC).</i></p> <p>Store in original container in a cool, dark place. Keep out of direct light and humidity.</p> <p>Directions for Use: <i>Take 1-2 servings as needed.</i></p> <p>Precautionary Allergen Statement: <i>Manufactured in a facility that handles almonds, anchovy, coconut, salmon, soy, and walnuts.</i></p> <p>The FDA has not evaluated this product for safety or efficacy. This product is intended for oral use. This product is not intended to diagnose, treat, cure or prevent any disease.</p>	<div><h3>Nutrition Facts</h3><p>30 servings per container</p><p>Serving size .2tsp (1ml)</p><hr/><p>Amount per serving</p><p>Calories 10</p><hr/><p>% Daily Value*</p><table><tr><td>Total Fat 1g</td><td>1%</td></tr><tr><td>Saturated Fat 0g</td><td>0%</td></tr><tr><td>Trans Fat 0g</td><td></td></tr><tr><td>Cholesterol 0mg</td><td>0%</td></tr><tr><td>Sodium 0mg</td><td>0%</td></tr><tr><td>Total Carbohydrate 0g</td><td>0%</td></tr><tr><td>Dietary Fiber 0g</td><td>0%</td></tr><tr><td>Total Sugars 0g</td><td></td></tr><tr><td>Includes 0g Added Sugars</td><td>0%</td></tr><tr><td>Protein 0g</td><td></td></tr></table><p>Vitamin D --mcg --%</p><p>Calcium --mg --%</p><p>Iron --mg --%</p><p>Potassium --mg --%</p><p><small>*The % Daily Value tells you how much a nutrient in a serving of food contributes to a daily diet. 2,000 calories a day is used for general nutrition advice.</small></p></div>	Total Fat 1g	1%	Saturated Fat 0g	0%	Trans Fat 0g		Cholesterol 0mg	0%	Sodium 0mg	0%	Total Carbohydrate 0g	0%	Dietary Fiber 0g	0%	Total Sugars 0g		Includes 0g Added Sugars	0%	Protein 0g	
Total Fat 1g	1%																				
Saturated Fat 0g	0%																				
Trans Fat 0g																					
Cholesterol 0mg	0%																				
Sodium 0mg	0%																				
Total Carbohydrate 0g	0%																				
Dietary Fiber 0g	0%																				
Total Sugars 0g																					
Includes 0g Added Sugars	0%																				
Protein 0g																					

This document is provided for documentation purposes only. The information contained herein is believed to be accurate and represents the best information currently available to Hammer Enterprises Integrated Solutions, LLC. However, Hammer Enterprises Integrated Solutions, LLC makes no warranty, expressed or implied, regarding such information, and assumes no liability resulting from its use. Users should make their own investigations to determine the information suitability for their particular purpose. If there are any questions concerning the information contained in this sheet or its applicability to a particular use, the user is instructed to contact Hammer Enterprises Integrated Solutions, LLC. Hammer Enterprises Integrated Solutions, LLC assumes no responsibility for injury from the use of the product described in this sheet in a way different from that provided in the label directions.