

2019-682A

Batch ID: T-16519-B1

Test ID: 7839094.0054

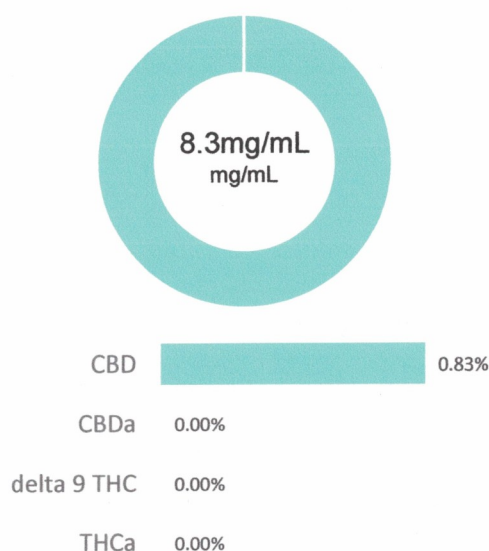
Reported: 18-Jun-2019

Method: TM14

Type: Solution

Test: Potency

CANNABINOID PROFILE



Compound	LOQ (mg/mL)	Result (mg/mL)	Result (mg/g)
Delta 9-Tetrahydrocannabinolic acid (THCA-A)	0.88	0.00	0.0
Delta 9-Tetrahydrocannabinol (Delta 9THC)	0.44	0.00	0.0
Cannabidiolic acid (CBDA)	0.70	0.00	0.0
Cannabidiol (CBD)	0.39	8.30	8.3
Delta 8-Tetrahydrocannabinol (Delta 8THC)	0.48	0.00	0.0
Cannabinolic Acid (CBNA)	1.21	0.00	0.0
Cannabinol (CBN)	0.54	0.00	0.0
Cannabigerolic acid (CBGA)	0.77	0.00	0.0
Cannabigerol (CBG)	0.43	0.00	0.0
Tetrahydrocannabivarinic Acid (THCVA)	0.76	0.00	0.0
Tetrahydrocannabivarin (THCV)	0.39	0.00	0.0
Cannabidivarinic Acid (CBDVA)	0.65	0.00	0.0
Cannabidivarin (CBDV)	0.35	0.00	0.0
Cannabichromenic Acid (CBCA)	0.66	0.00	0.0
Cannabichromene (CBC)	0.80	0.00	0.0
Total Cannabinoids		8.30	8.29
Total Potential THC**		0.00	0.00
Total Potential CBD**		8.30	8.29

NOTES:

Density = 1g/mL

N/A

% = % (w/w) = Percent (Weight of Analyte / Weight of Product)

* Total Cannabinoids result reflects the absolute sum of all cannabinoids detected.

** Total Potential THC/CBD is calculated using the following formulas to take into account the loss of a carboxyl group during decarboxylation step.

Total THC = THC + (THCa * (0.877)) and Total CBD = CBD + (CBDa * (0.877))

FINAL APPROVAL



 Daniel Weidensaul
18-Jun-2019
1:05 PM

PREPARED BY / DATE



 Greg Zimpfer
18-Jun-2019
1:54 PM

APPROVED BY / DATE

Testing results are based solely upon the sample submitted to Botanacor Laboratories, LLC, in the condition it was received. Botanacor Laboratories, LLC warrants that all analytical work is conducted professionally in accordance with all applicable standard laboratory practices using validated methods. Data was generated using an unbroken chain of comparison to NIST traceable Reference Standards and Certified Reference Materials. This report may not be reproduced, except in full, without the written approval of Botanacor Laboratories, LLC. ISO/IEC 17025:2005 Accredited A2LA Certificate Number 4329.02



Certificate #4329.02

SECTION 1: PRODUCT DETAILS

PRODUCT NAME	Hemp-derived CBD Tincture – Salmon Oil Base										
COMMON NAME	Hemp CBD Tincture in Salmon Oil										
PRODUCT DESCRIPTION	250 mg CBD Tincture in Salmon Oil (THC Free)										
PLANT PART	Aerial parts of industrial hemp plant										
INTENDED USE	For oral consumption										
EXTRACTION SOLVENT(S)	<table><tr><td>X</td><td>CO₂</td><td>X</td><td>Ethanol</td><td>X</td><td>Hexane</td></tr></table>					X	CO ₂	X	Ethanol	X	Hexane
X	CO ₂	X	Ethanol	X	Hexane						
COUNTRY OF ORIGIN	USA		LOT #	T-16519-B1							
MANUFACTURE DATE	06/14/2019		CBD POTENCY	250 mg per 30 mL							
BEST BY DATE	06/14/2020		NET WEIGHT	1.0 fl. oz. (30 mL)							

SECTION 2: INGREDIENT AND NUTRITION INFORMATION

INGREDIENTS LIST	NUTRITION FACTS PANEL																																										
<p>Ingredients: Salmon Oil, Hemp Cannabidiol (CBD) Isolate</p> <p>Contains: Salmon.</p> <p>Manufactured in a facility that handles soy, salmon, anchovy, and walnuts.</p> <p>The FDA has not evaluated this product for safety or efficacy. This product is intended for oral use. This product is not intended to diagnose, treat, cure or prevent any disease.</p>	<table border="1"> <tr> <th colspan="2">Nutrition Facts</th></tr> <tr> <td colspan="2">30 servings per container</td></tr> <tr> <td>Serving size</td><td>0.2 tsp (1mL)</td></tr> <tr> <td>Amount per serving</td><td></td></tr> <tr> <td>Calories</td><td>10</td></tr> <tr> <td colspan="2">% Daily Value*</td></tr> <tr> <td>Total Fat 1g</td><td>1%</td></tr> <tr> <td>Saturated Fat 0g</td><td>0%</td></tr> <tr> <td>Trans Fat --g</td><td></td></tr> <tr> <td>Cholesterol 10mg</td><td>3%</td></tr> <tr> <td>Sodium --mg</td><td>--%</td></tr> <tr> <td>Total Carbohydrate --g</td><td>--%</td></tr> <tr> <td>Dietary Fiber --g</td><td>--%</td></tr> <tr> <td>Total Sugars --g</td><td></td></tr> <tr> <td>Includes --g Added Sugars</td><td>--%</td></tr> <tr> <td>Protein --g</td><td></td></tr> <tr> <td>Vitamin D --mcg</td><td>--%</td></tr> <tr> <td>Calcium --mg</td><td>--%</td></tr> <tr> <td>Iron --mg</td><td>--%</td></tr> <tr> <td>Potassium --mg</td><td>--%</td></tr> <tr> <td colspan="2"> <small>*The % Daily Value tells you how much a nutrient in a serving of food contributes to a daily diet. 2,000 calories a day is used for general nutrition advice.</small> </td></tr> </table>	Nutrition Facts		30 servings per container		Serving size	0.2 tsp (1mL)	Amount per serving		Calories	10	% Daily Value*		Total Fat 1g	1%	Saturated Fat 0g	0%	Trans Fat --g		Cholesterol 10mg	3%	Sodium --mg	--%	Total Carbohydrate --g	--%	Dietary Fiber --g	--%	Total Sugars --g		Includes --g Added Sugars	--%	Protein --g		Vitamin D --mcg	--%	Calcium --mg	--%	Iron --mg	--%	Potassium --mg	--%	<small>*The % Daily Value tells you how much a nutrient in a serving of food contributes to a daily diet. 2,000 calories a day is used for general nutrition advice.</small>	
Nutrition Facts																																											
30 servings per container																																											
Serving size	0.2 tsp (1mL)																																										
Amount per serving																																											
Calories	10																																										
% Daily Value*																																											
Total Fat 1g	1%																																										
Saturated Fat 0g	0%																																										
Trans Fat --g																																											
Cholesterol 10mg	3%																																										
Sodium --mg	--%																																										
Total Carbohydrate --g	--%																																										
Dietary Fiber --g	--%																																										
Total Sugars --g																																											
Includes --g Added Sugars	--%																																										
Protein --g																																											
Vitamin D --mcg	--%																																										
Calcium --mg	--%																																										
Iron --mg	--%																																										
Potassium --mg	--%																																										
<small>*The % Daily Value tells you how much a nutrient in a serving of food contributes to a daily diet. 2,000 calories a day is used for general nutrition advice.</small>																																											

SECTION 3: FORMULA COMPOSITION

ACTIVE INGREDIENTS	LOT NUMBER
Hemp Cannabidiol (CBD) Isolate	ISO-14719-5L-B3
MEDIUM BASE	LOT NUMBER
Salmon Oil	001-2018

SECTION 4: PHYSICAL AND CHEMICAL PROPERTIES

PHYSICAL STATE	Liquid	COLOR	Translucent, light amber homogenous oil	ODOR	Fish
----------------	--------	-------	---	------	------

SECTION 5: RESIDUAL SOLVENT ANALYSIS FOR HEMP CBD OIL AND/OR CBD ISOLATE

Hexane	< 60 ppm	Ethanol	< 100 ppm
--------	----------	---------	-----------

SECTION 6: STORAGE AND HANDLING

STORAGE AND HANDLING	Store in original container in a cool, dark place. Keep out of direct light and humidity.
----------------------	---