

Sacred Leaf

Product Description: Hemp CBD Tincture 500mg/30mL, MCT, CO2, NAT

Invoice Number: 2020-496A

Lot Number: T-15720-B5

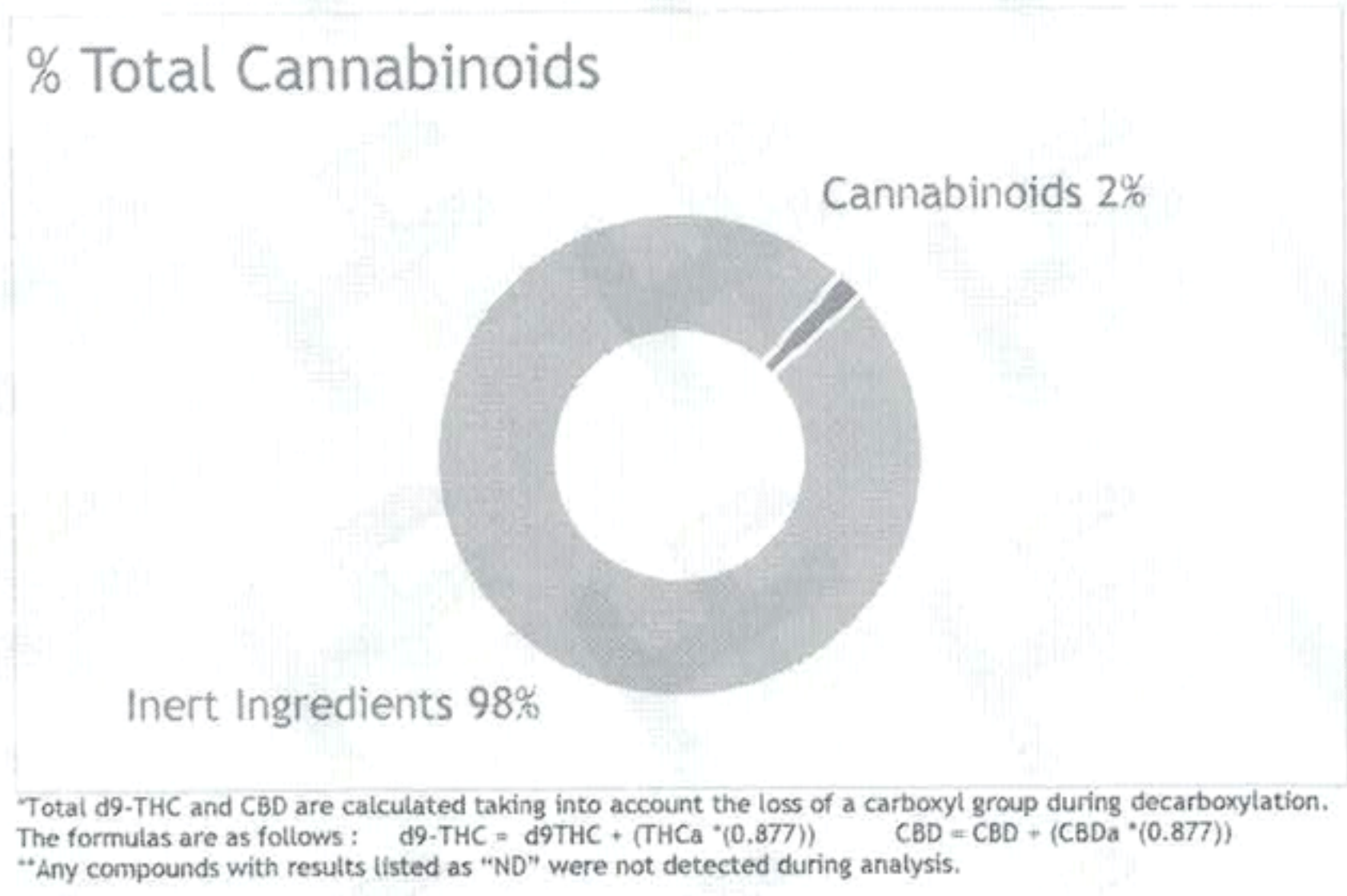
Best By Date: Dec 04, 2021

Product Code: T-500-CO2-MCT-NAT-30mL

Date of Analysis: Jun 10, 2020

Manufacture Date: Jun 05, 2020

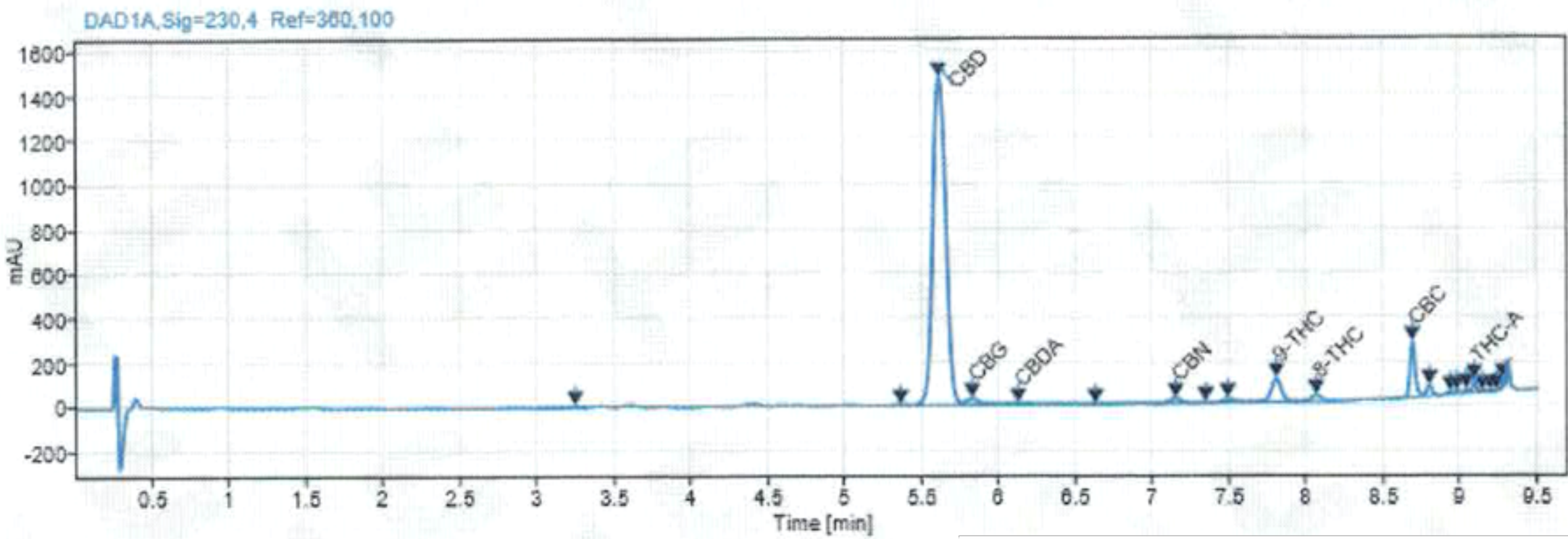
Cannabinoid Potency - Expected CBD: 16.67mg/mL ± 10%



	mg/mL	%
Total CBD:	17.11 mg/mL	1.71 %
CBD:	17.10 mg/mL	1.71 %
CBDA:	<0.05 mg/mL	<0.01 %
d9-THC:	0.92 mg/mL	0.09 %
CBC:	0.52 mg/mL	0.05 %
CBG:	0.28 mg/mL	0.03 %
CBGa:	ND	ND
CBN:	0.08 mg/mL	0.01 %
CBDV:	ND	ND
d8-THC:	0.29 mg/mL	0.03 %
THCa:	0.07 mg/mL	0.01 %

Density: 0.909 (kg/m³)Specific Gravity: 0.912

Chromatogram



SECTION 1: PRODUCT DETAILS

PRODUCT NAME	Hemp-derived Cannabidiol (CBD) Tincture – MCT Oil Base, Full-Spectrum		
PRODUCT DESCRIPTION	CBD Tincture in Medium Chain Triglyceride, Full-Spectrum		
INTENDED USE	For oral consumption.		
COUNTRY OF ORIGIN	USA	LOT #	T-15720-B5
MANUFACTURE DATE	Jun 05, 2020	CBD POTENCY	17.10 mg/mL
BEST BY DATE	Dec 04, 2021	NET WEIGHT	1 fl. oz (30 mL) per bottle

SECTION 2: INGREDIENT AND NUTRITION INFORMATION

INGREDIENTS LIST	NUTRITION FACTS PANEL																												
<p>Ingredients: Medium Chain Triglyceride (MCT) Oil, Hemp Cannabidiol (CBD) Oil. <i>(Contains <0.3% THC).</i></p> <p><i>Store in original container in a cool, dark place. Keep out of direct light and humidity.</i></p> <p>Directions for Use: <i>Take 1-2 servings as needed.</i></p> <p>Precautionary Allergen Statement: <i>Manufactured in a facility that handles almonds, anchovy, coconut, salmon, soy, and walnuts.</i></p> <p><i>The FDA has not evaluated this product for safety or efficacy. This product is intended for oral use. This product is not intended to diagnose, treat, cure or prevent any disease.</i></p>	<div><h3>Nutrition Facts</h3><p>30 servings per container</p><p>Serving size 0.2 tsp (1ml)</p><hr/><p>Amount per serving</p><p>Calories 10</p><hr/><p>% Daily Value*</p><table><tr><td>Total Fat 1g</td><td>1%</td></tr><tr><td>Saturated Fat 1g</td><td>5%</td></tr><tr><td>Trans Fat 0g</td><td></td></tr><tr><td>Cholesterol 0mg</td><td>0%</td></tr><tr><td>Sodium 0mg</td><td>0%</td></tr><tr><td>Total Carbohydrate 0g</td><td>0%</td></tr><tr><td>Dietary Fiber 0g</td><td>0%</td></tr><tr><td>Total Sugars 0g</td><td></td></tr><tr><td>Includes 0g Added Sugars</td><td>0%</td></tr><tr><td>Protein 0g</td><td></td></tr><tr><td>Vitamin D 0mcg</td><td>0%</td></tr><tr><td>Calcium 0mg</td><td>0%</td></tr><tr><td>Iron 0mg</td><td>0%</td></tr><tr><td>Potassium 0mg</td><td>0%</td></tr></table><p><small>*The % Daily Value tells you how much a nutrient in a serving of food contributes to a daily diet. 2,000 calories a day is used for general nutrition advice.</small></p></div>	Total Fat 1g	1%	Saturated Fat 1g	5%	Trans Fat 0g		Cholesterol 0mg	0%	Sodium 0mg	0%	Total Carbohydrate 0g	0%	Dietary Fiber 0g	0%	Total Sugars 0g		Includes 0g Added Sugars	0%	Protein 0g		Vitamin D 0mcg	0%	Calcium 0mg	0%	Iron 0mg	0%	Potassium 0mg	0%
Total Fat 1g	1%																												
Saturated Fat 1g	5%																												
Trans Fat 0g																													
Cholesterol 0mg	0%																												
Sodium 0mg	0%																												
Total Carbohydrate 0g	0%																												
Dietary Fiber 0g	0%																												
Total Sugars 0g																													
Includes 0g Added Sugars	0%																												
Protein 0g																													
Vitamin D 0mcg	0%																												
Calcium 0mg	0%																												
Iron 0mg	0%																												
Potassium 0mg	0%																												