

Sacred Leaf

Product Description: Hemp CBD Inhalant 500mg/30mL VGP, OBSD, NAT

Invoice Number: 2021-385B

Lot Number: INH-18121-B1

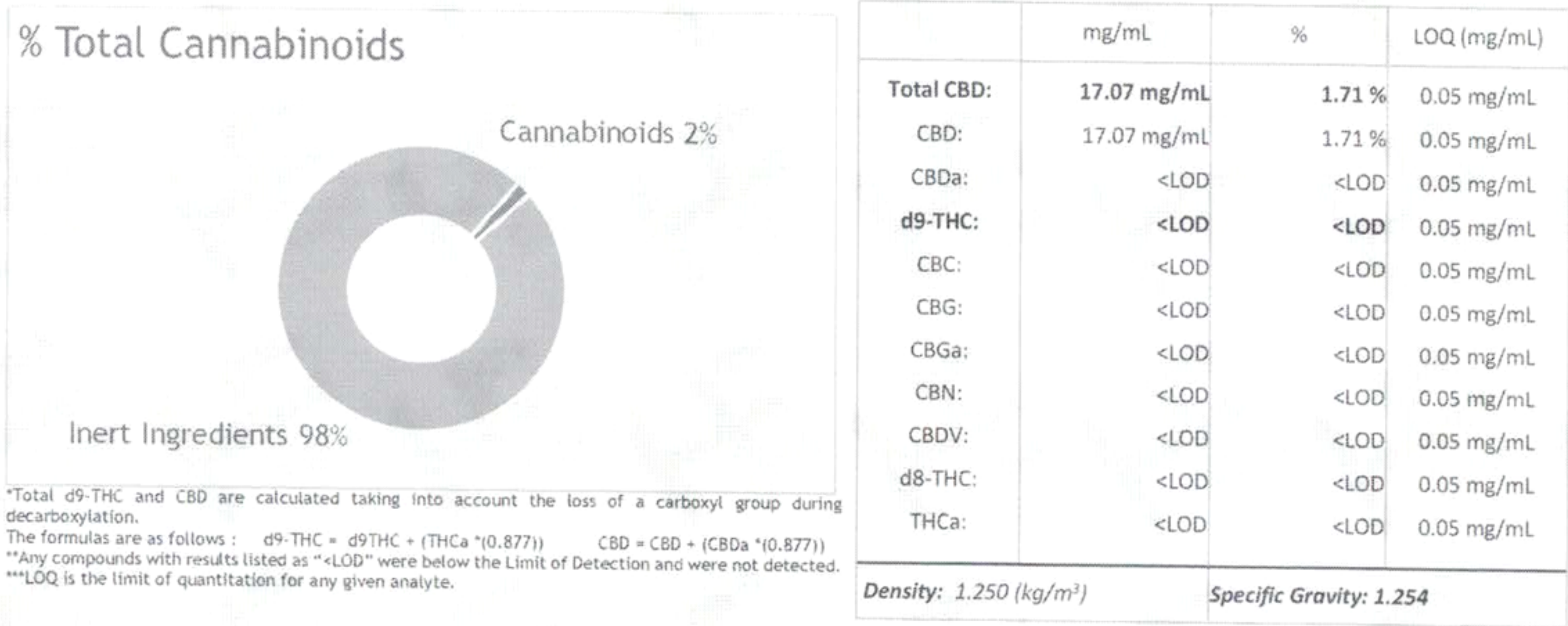
Manufacture Date: Jun 30, 2021

Product Code: INH-500-OBSD-VGP-NAT-30

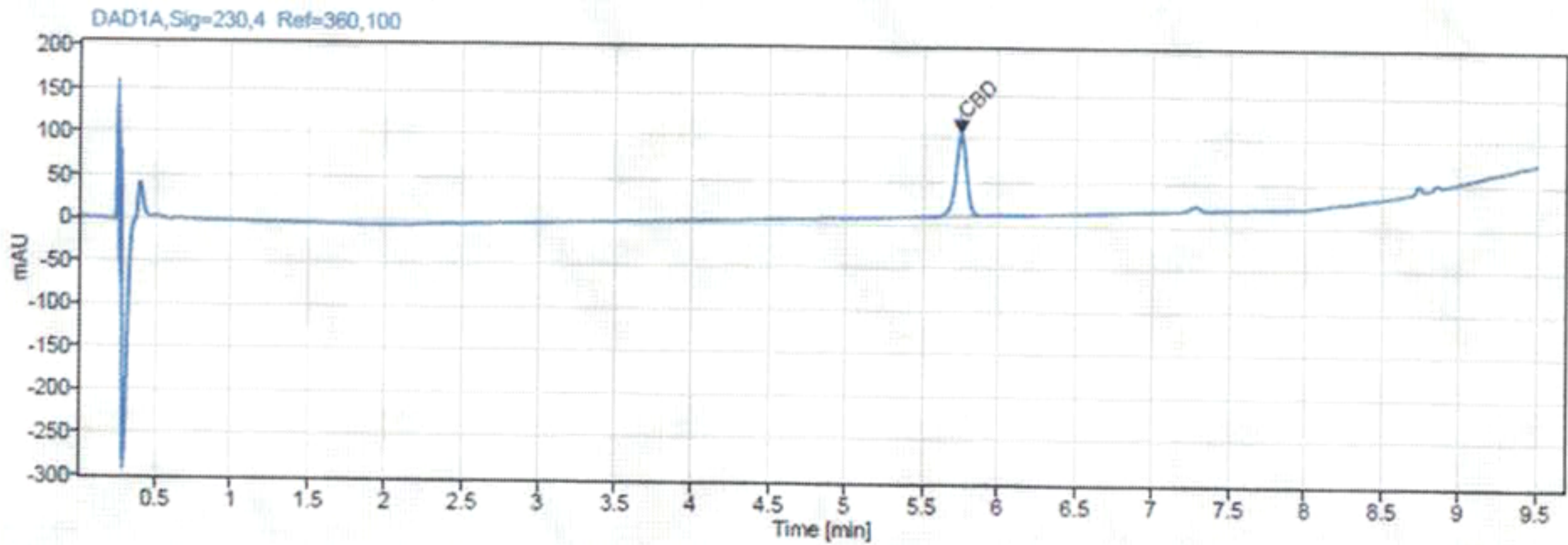
Date of Analysis: Jul 1, 2021

Best By Date: Jun 30, 2022

Cannabinoid Potency - Expected CBD: 16.67 mg/mL ± 10%



Chromatogram



SECTION 1: PRODUCT DETAILS

PRODUCT NAME	Hemp-derived Cannabidiol (CBD) E-Liquid – Vegetable Glycerin Base, Broad-Spectrum		
PRODUCT DESCRIPTION	CBD Bulk E-Liquid in Vegetable Glycerin, Broad-Spectrum		
INTENDED USE	Fill Vape E-liquid in your favorite vaporizer, atomizer, or electronic cigarette. Not intended for oral consumption.		
COUNTRY OF ORIGIN	USA	LOT #	INH-18121-B1
MANUFACTURE DATE	Jun 30, 2021	CBD POTENCY	17.07 mg/mL
BEST BY DATE	Jun 30, 2022	NET WEIGHT	1 fl. Oz. (30mL)

SECTION 2: INGREDIENT INFORMATION

INGREDIENTS LIST
Ingredients: Vegetable Glycerin, Polysorbate 80, Organic Hemp Cannabidiol Broad-Spectrum (CBD) Distillate. (Contains <0.3% THC).
<p>Precautionary Allergen Statement:</p> <p>Manufactured in a facility that handles almonds, anchovy, coconut, salmon, soy, and walnuts.</p> <p>The FDA has not evaluated this product for safety or efficacy. This product is not intended for oral use. This product is not intended to diagnose, treat, cure or prevent any disease.</p>

SECTION 3: STORAGE AND HANDLING

STORAGE AND HANDLING	Store in original container in a cool, dark place. Keep out of direct light and humidity.
----------------------	---

This document is provided for documentation purposes only. The information contained herein is believed to be accurate and represents the best information currently available to Hammer Enterprises Integrated Solutions, LLC. However, Hammer Enterprises Integrated Solutions, LLC makes no warranty, expressed or implied, regarding such information, and assumes no liability resulting from its use. Users should make their own investigations to determine the information suitability for their particular purpose. If there are any questions concerning the information contained in this sheet or its applicability to a particular use, the user is instructed to contact Hammer Enterprises Integrated Solutions, LLC. Hammer Enterprises Integrated Solutions, LLC assumes no responsibility for injury from the use of the product described in this sheet in a way different from that provided in the label directions.